

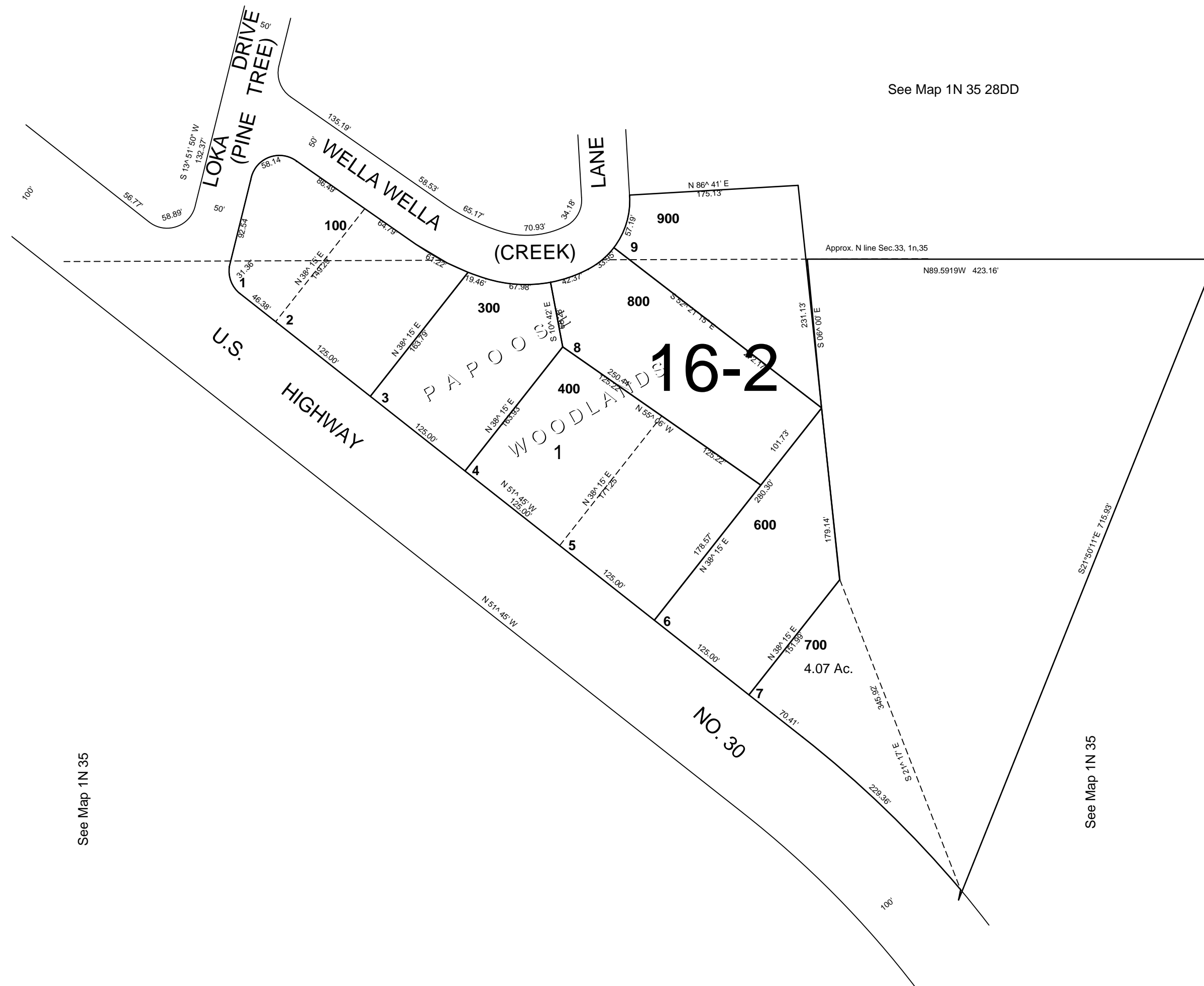
This map was prepared for Assessment & Taxation purposes only and was NOT prepared nor is it suitable for legal, engineering or surveying purposes.

NE1/4 NE1/4 SEC 33 T1N R35E WM UMATILLA COUNTY

SCALE 1"=100'

1N 35 33AA

AERIAL PHOTO NO. NZ-3P-153



CANCELLED NOS
500
200

REVISED: 05-19-16

1N 35 33AA