

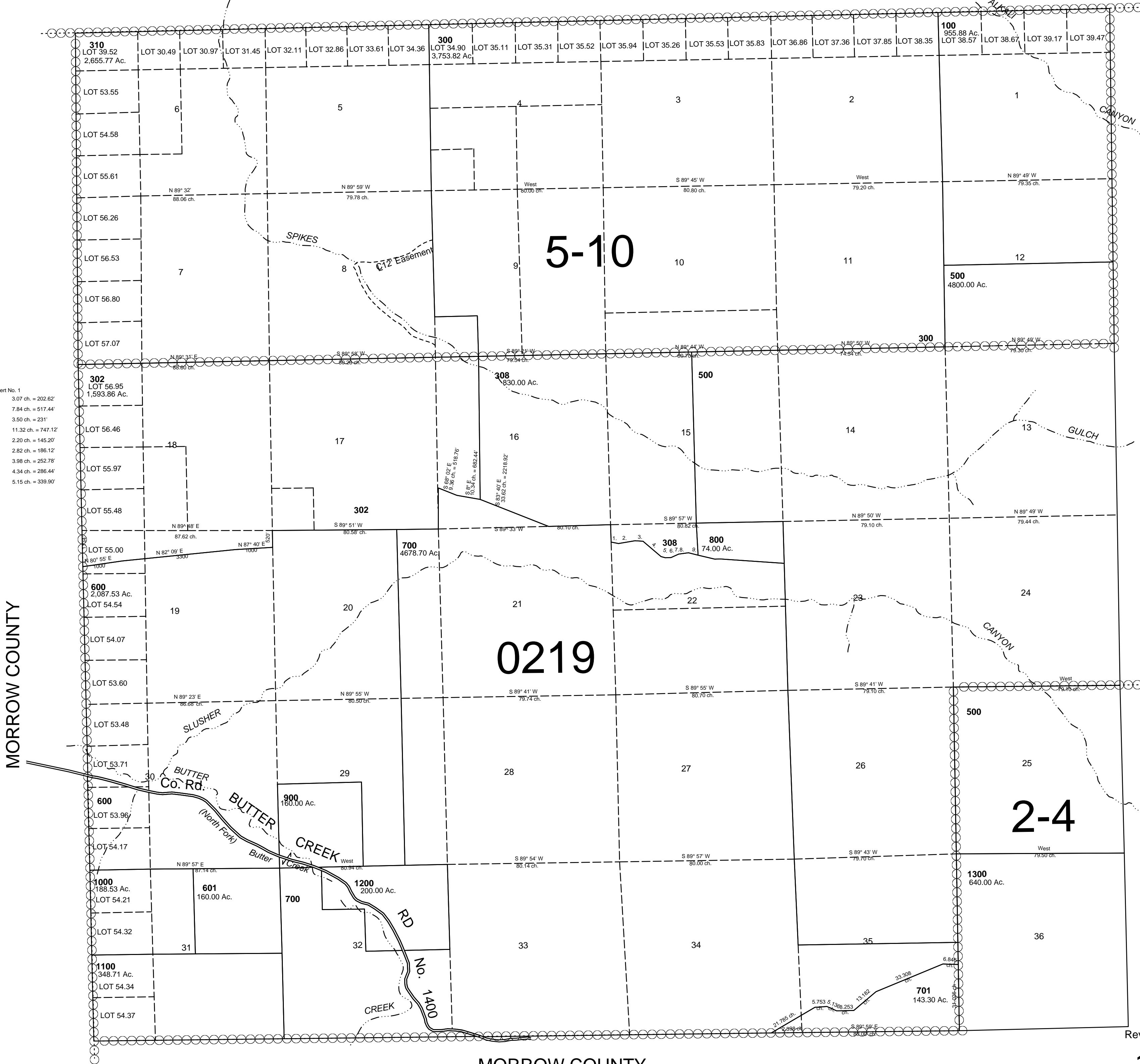
This map was prepared for Assessment & Taxation purposes only and was NOT prepared nor is it suitable for legal, engineering or surveying purposes.

T1N R29E WM UMATILLA COUNTY, OR

Aerial Photo No. NZ-3P-73,75,77
3P-110,108, 106
3P-117,119,121

1N29

SCALE 1"-2000'



CANCELLED
TL 200
400
301
303
304
305
306
307
309
311
313
314
315
312

- Insert No. 1
1. S 77° 30' E 3.07 ch. = 202.62'
 2. N 83° E 7.84 ch. = 517.44'
 3. S 85° 10' E 3.50 ch. = 231'
 4. S 48° 30' E 11.32 ch. = 747.12'
 5. S 60° 10' E 2.20 ch. = 145.20'
 6. S 89° 50' E 2.82 ch. = 186.12'
 7. N 70° 40' E 3.98 ch. = 252.78'
 8. N 84° 40' E 4.34 ch. = 286.44'
 9. S 76° 30' E 5.15 ch. = 339.90'

Revised :01-11-16

MORROW COUNTY

1N29