

This map was prepared for Assessment & Taxation purposes only and was NOT prepared nor is it suitable for legal, engineering or surveying purposes.

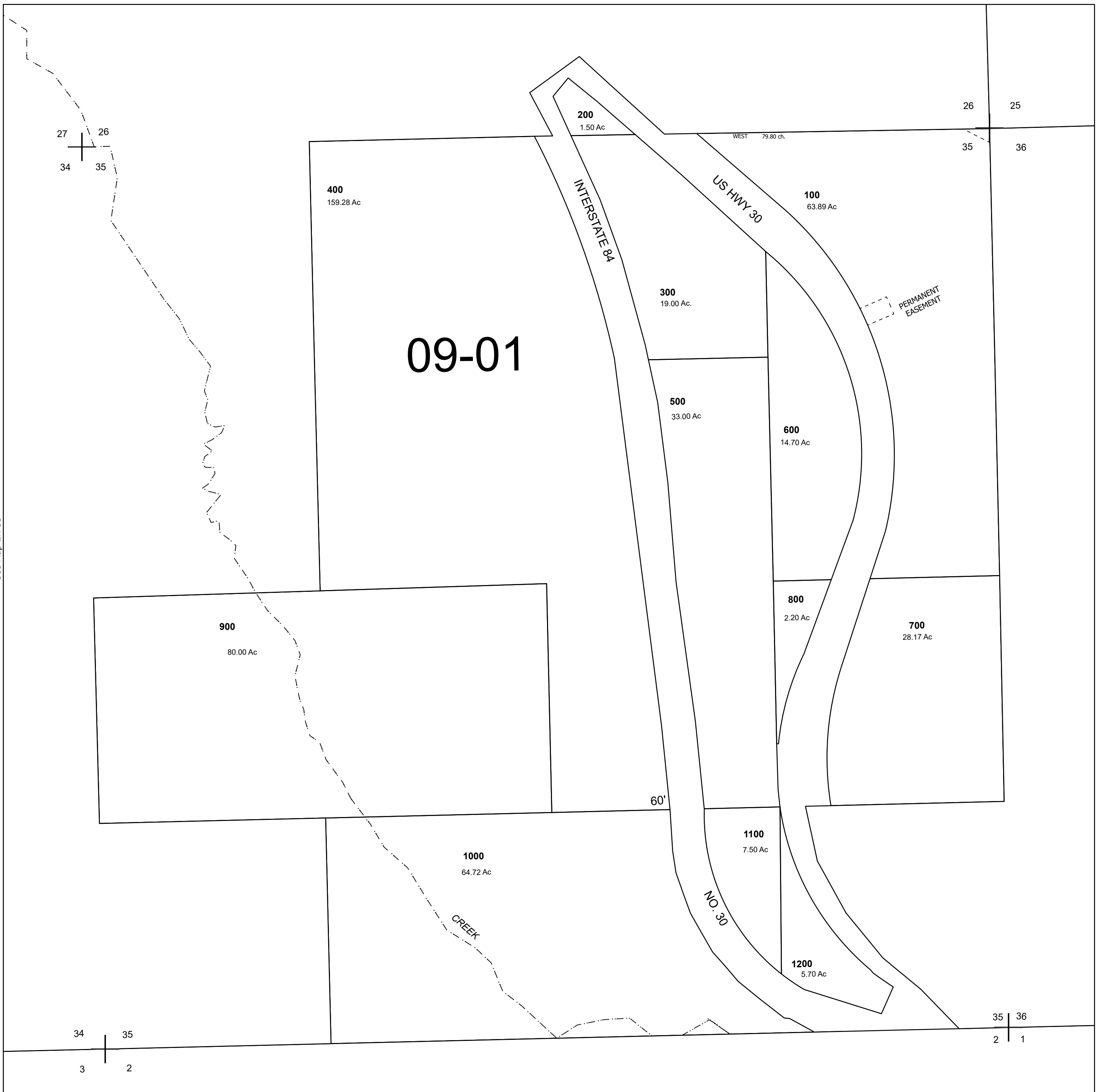
Cancelled Tax Lots

# SEC 35 T2N R33E WM UMATILLA COUNTY

## 2N 33 35

SCALE 1" = 400'

See Map 2N 33



See Map 2N 33

See Map 2N 33

Revised 3/30/2026

See Map 1N 33

## 2N 33 35