

This map was prepared for Assessment & Taxation purposes only and was NOT prepared nor is it suitable for legal, engineering or surveying purposes.

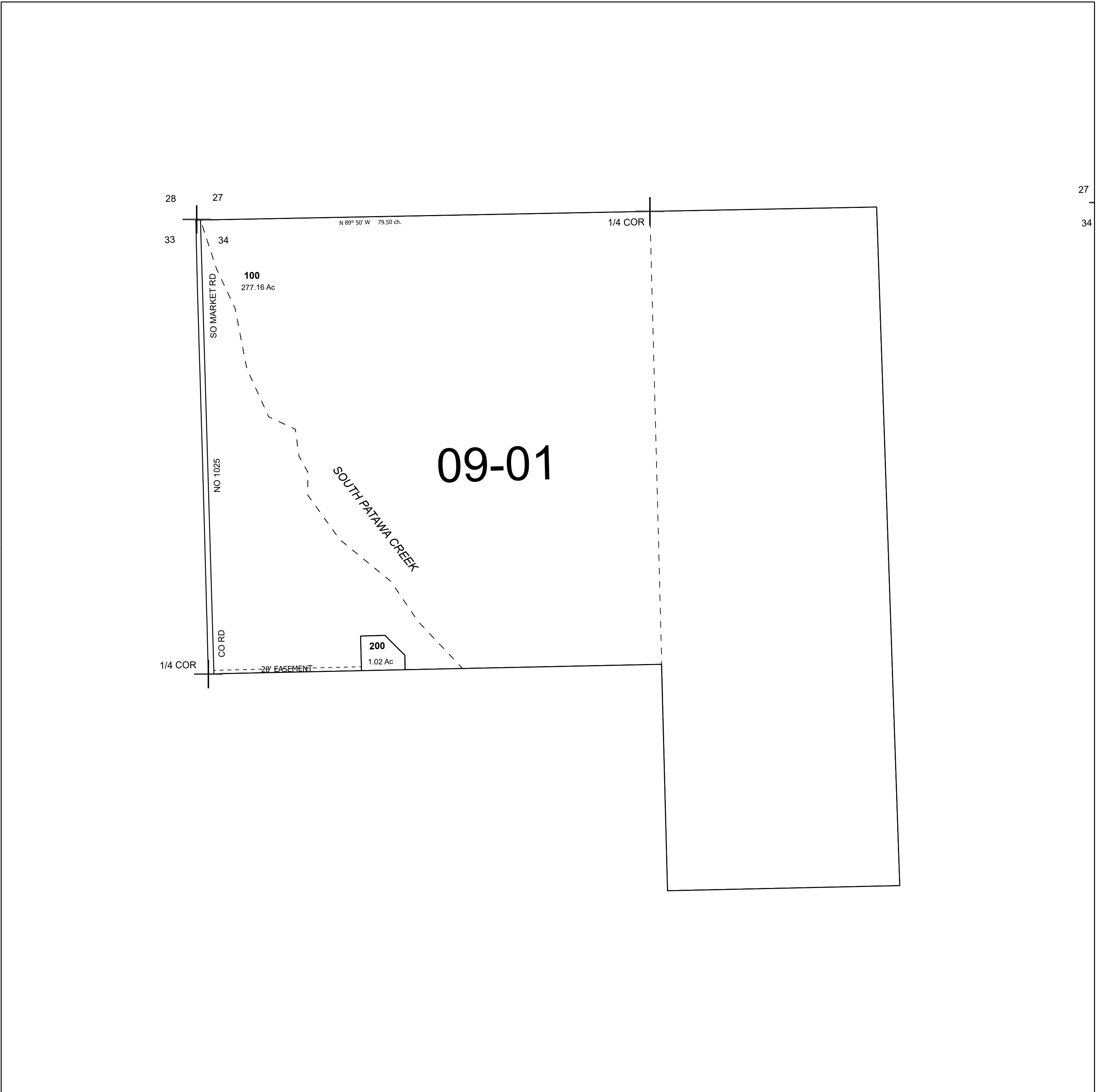
Cancelled Tax Lots

SEC 34 T2N R33E WM UMATILLA COUNTY

SCALE 1" = 400'

See Map 2N 33

2N 33 34



See Map 2N 33

See Map 2N 33